

# Operate **THREE** phase machinery From your **SINGLE** phase power supply



With a **POLYPHAZ** converter

## Rotary phase converters

### Features

- High efficiency design
- No harmonics
- Floating or slip pole rotaries R/15>
- VolTrak, FaulTrak standard R/15>
- Thermal overload protection all models
- Operates multiple three phase loads
- 3 Year Warranty
- Vermin Proof, sealed cabinets & forced cooling

### Benefits

- Cost saving in having three phase power installed.
- No requirement to modify existing three phase equipment.
- No high speed capacitor switching =No harmonics = Lower running costs
- Single phase supply tariff from supply utility



C-Tick approved N10944

**PJ&PJ Taylor Pty Ltd** ABN 52 066 847 765

**Admin / Postal: 5 Shea grove leeming Perth WA 6149**

Manufacturing/service metro: spencers st Jandakot

Manufacturing regional: moylan way busselton

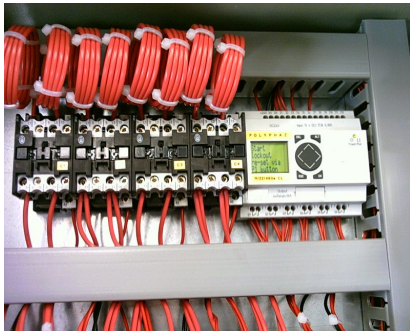
Ph: **08 93323401** International +61 8 93323401

Fx: 08 62678045 International +61 8 62678045

## Description

The POLYPHAZ converter represents a cost effective solution to operate three phase equipment from your single phase power supply. For more than ten years the POLYPHAZ converter has been recognised for its innovative design from both power utilities & equipment manufactures & formed a front line piece of equipment of hundreds of successful rural and remote ventures from woodworking & metalworking businesses to some of the largest dairy farms & wineries throughout Australia & overseas.

## VOLTRAK The second generation Rotary Phase Converter



VOLTRAK system

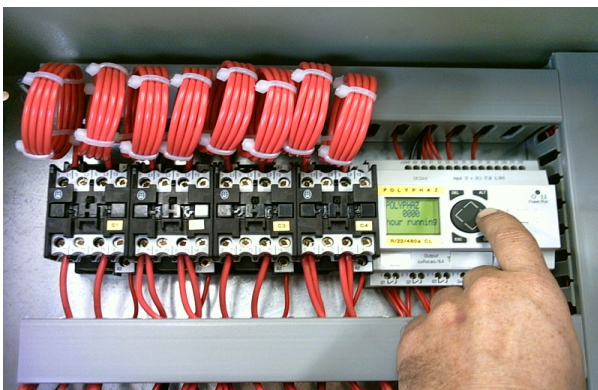


Remote application requiring a balanced power supply

The VOLTRAK system represents the second generation in rotary phase converters, available for some time as a option when superior voltage balance or asymmetry was required now fitted as standard on all rotary converters from model R/15 > .Modern three phase equipment & control systems operate at high efficiency levels & require a balanced supply to achieve this, the VOLTRAK system monitors the output supply to maintain a balanced output to meet the demands of modern three phase equipment

## FAULTRAK Text display feature

In most cases our rotary converters are used in some remote areas so we understand that correct installation, maintenance & accurate fault diagnosis all form part of long term trouble free operation. To achieve this we have developed the FaulTrak system in our converters from models R/15 > as standard equipment. Eliminates the guesswork when something goes wrong.



FaulTrak text display & user access

### Features

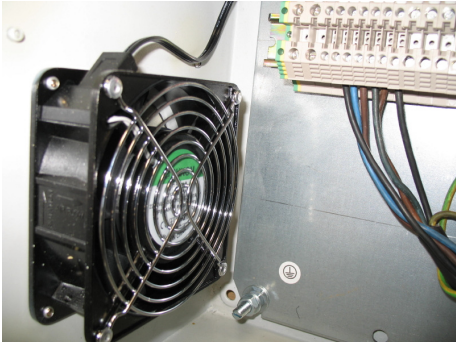
- Monitors operational status of converter
- 8 Protection & control functions
- Diagnosis & Maintenance tools
- Supply voltage monitoring
- Tells the operator what the fault is
- Displays output loading in %
- Hour run meter

## PERFORMANCE BY DESIGN

### VERMIN PROOF

**Designed to keep vermin out**

Don't think it's important? , We learnt the lesson a long time ago; mice can do a lot of damage in an electrical control cabinet that's why we used sealed cabinets & forced air cooling



Forced air cooling



sealed cabinets

### EASE OF MAINTENANCE

**positively earthed  
& easily replaced**

Little things that you may not notice at first but will prove vital down the track, like securely mounted key components, not cable tied but fixed securely to not only provide the required positive earth but ease of replacement.

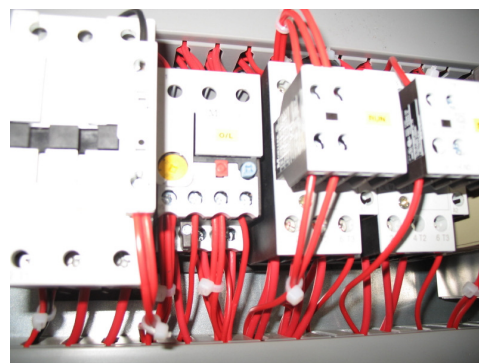


Simple component replacement

### POSITIVE PROTECTION

**thermal overloads fitted ALL  
models as required by AS3000**

Positive rotary protection can only be achieved by a bi-metal thermal overload.

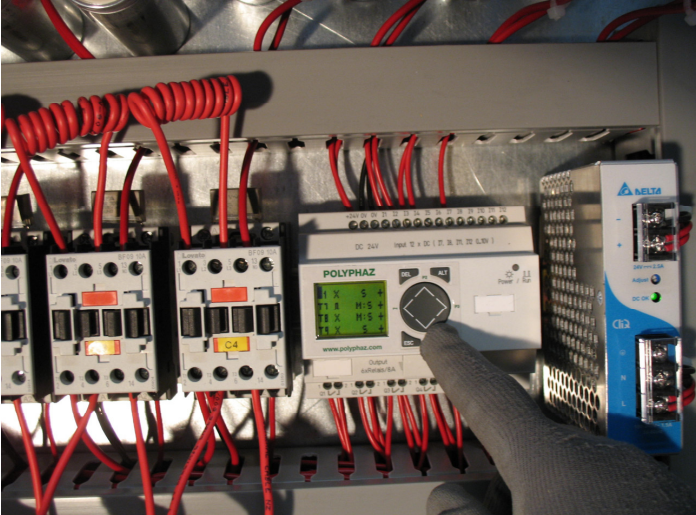


Thermal overload protection ALL models

## PERFORMANCE BY DESIGN

### FIELD SERVICEABLE

Down time important? Integrated controllers make life easier for the manufacture but YOU only have ONE option when the controller fails..Take it back to the manufacturer. The POLYPHAZ converter incorporates, capacitor switching - power supply- microprocessor *separately* making field service a reality.

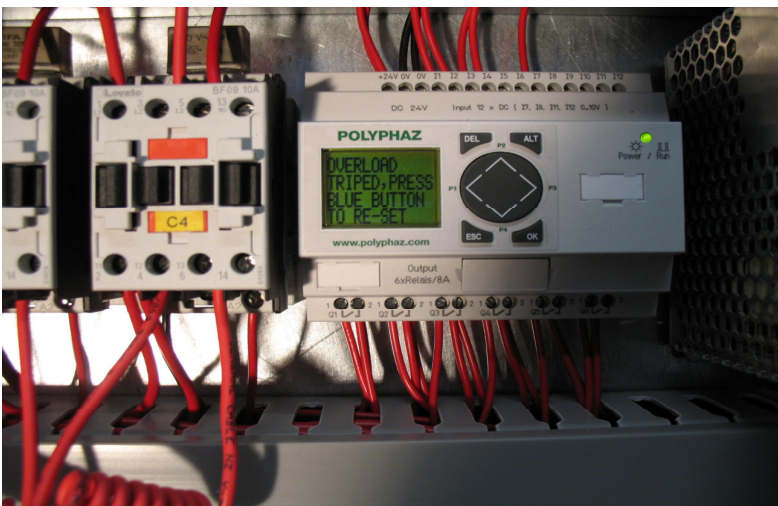


### SITE CONDITION ADAPTABLE

We DONT believe in the philosophy of “One size fits all” with regards to controllers, site conditions and field applications can vary and may need to be adapted to suit the application or field conditions and in some case program variations, all possible with the Voltrak system.

### FAULT TEXT DISPLAY

Know what’s happened & Know what’s gone wrong.



# APPLICATIONS

Pumping



Dairy farms



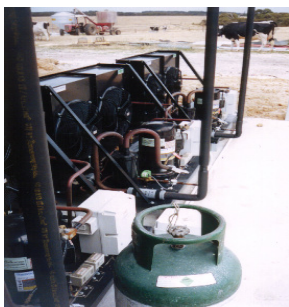
Refrigeration & A/C



Wineries



Machine tools



Irrigation Equipment



A/C Units



## Hardware Technical Specification

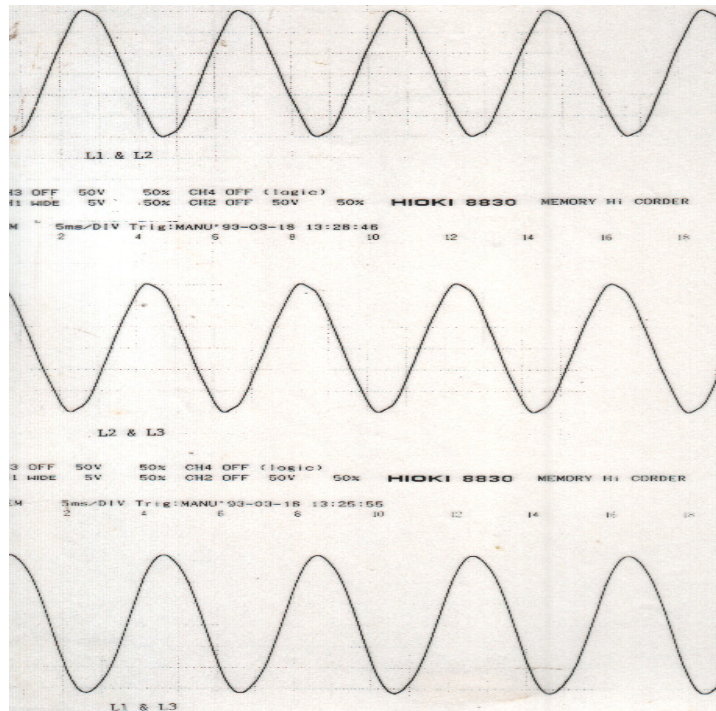
Feature	EPZ	PZ	R15>R37	R75
BI-metal Thermal overload rotary protection	✓	✓	✓	✓
2 wire control	✓	✓	✓	✓
Stop/Start buttons	✓	✓	✓	✓
FaultTrak Text display			✓	✓
VolTrak 9 stage system +/-6%		✓		
VolTrak 16 stage system +/-6%			✓	✓
Vermin proof	✓	✓	✓	✓
Independent fan forced cooling	✓	✓	✓	✓
Generator protection class supply breaker			✓	✓
Lightning and overvoltage protection			R37	✓
Auto start/stop option possible		✓	✓	✓
Single wire multi motor control possible		✓	✓	✓
NeuTrak option possible		✓	✓	✓
SE .H.M.I user machine interface *				✓

\*Higher specification, covered in separate specification, available on request.

## Software Technical Specification

Feature	EPZ	PZ	R15>37	R75
Input supply voltage monitoring *		✓	✓	✓
Start fail lockout *		✓	✓	✓
Start overtime lockout *		✓	✓	✓
Hour run meter			✓	✓
Remote fault reset possible		✓	✓	✓
Low output/capacitor fail fault *		✓	✓	✓
Off delay start *		✓	✓	✓
Off delay restart *		✓	✓	✓
Off delay due to power failure *		✓	✓	✓
Start fail re-start, 3 shot *		✓	✓	✓
Output % loading via Txt display			✓	✓

\*site/user adjustments possible by H.M.I panel



Sine wave produced by POLYPHAZ rotary converter

**w w w . p o l y p h a z . c o m**

